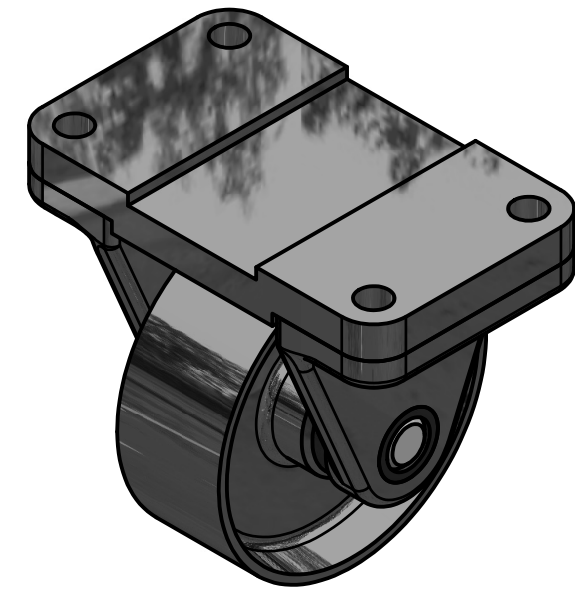
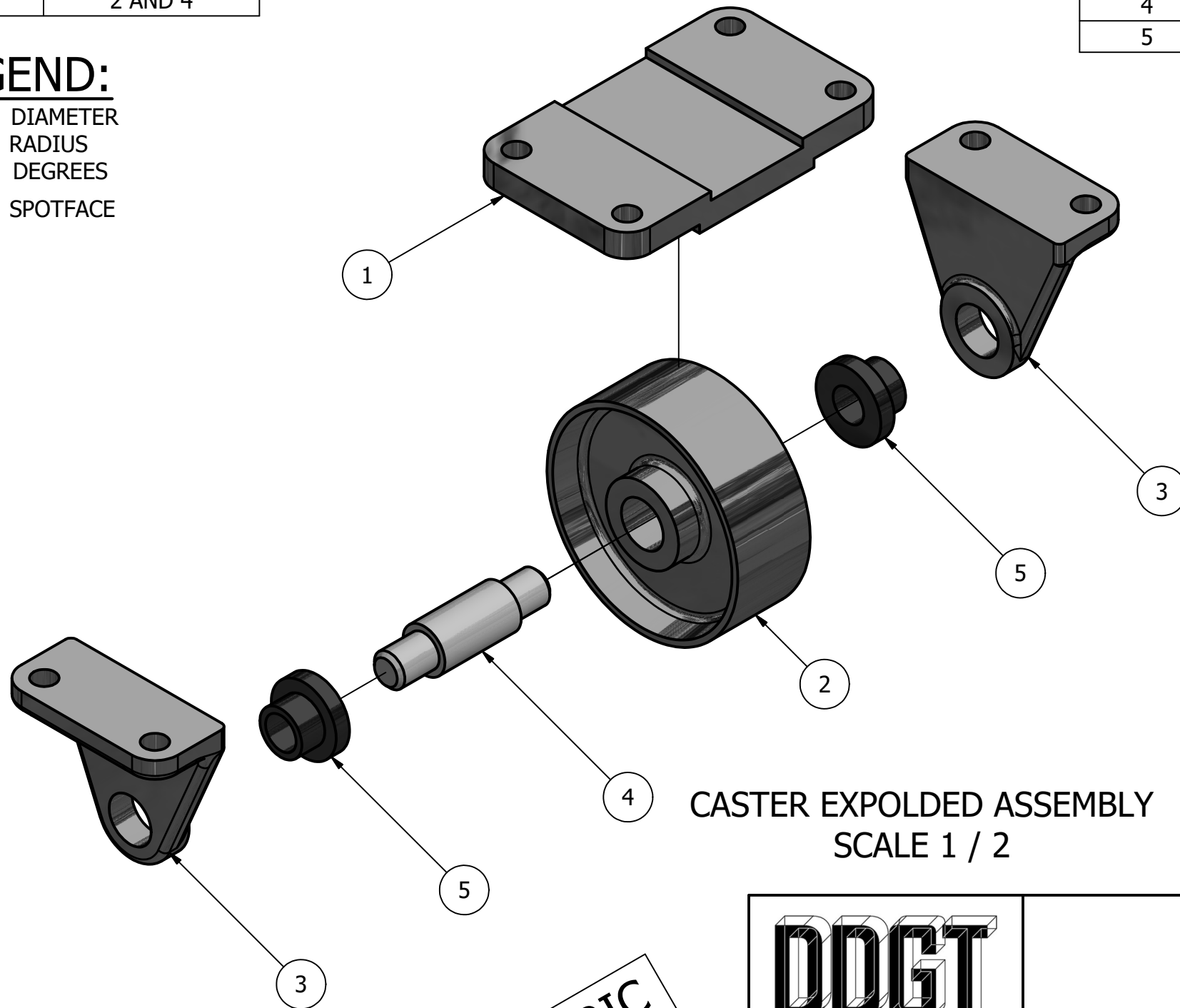


FIT	BETWEEN PARTS
H8/f7	4 AND 5
H7/p6	3 AND 5
H8/f7	2 AND 4

LEGEND:

- ∅ DIAMETER
- R RADIUS
- ° DEGREES
- └ SPOTFACE

PARTS LIST			
ITEM	QTY	PART NUMBER	MATERIAL
1	1	TOP PLATE	IRON, MALLEABLE
2	1	WHEEL	IRON, MALLEABLE
3	2	AXLE SUPPORT	IRON, MALLEABLE
4	1	AXLE	SAE 1020
5	2	BUSHING	BRONZE



CASTER ASSEMBLY
SCALE 1 / 2

CASTER EXPLODED ASSEMBLY
SCALE 1 / 2

GENERAL NOTES:

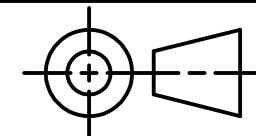
ROUNDS AND FILLETS R3

METRIC



DIGITAL DESIGN
GRAPHICS
TECHNOLOGY

WWW.DDGT.NET



TOLERANCES UNLESS SPECIFIED:
MILLIMETERS:
WHOLE NUMBERS = ±.5
X = ±.25
XX = ±.12

ANGLES ±1 DEGREE

SURFACES 32 ✓

COURSE: DDGT120

INVENTOR DRAWING NAME:
CASTER

FIG #: 9-51

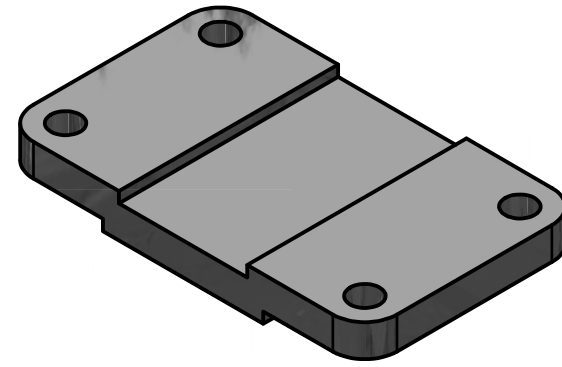
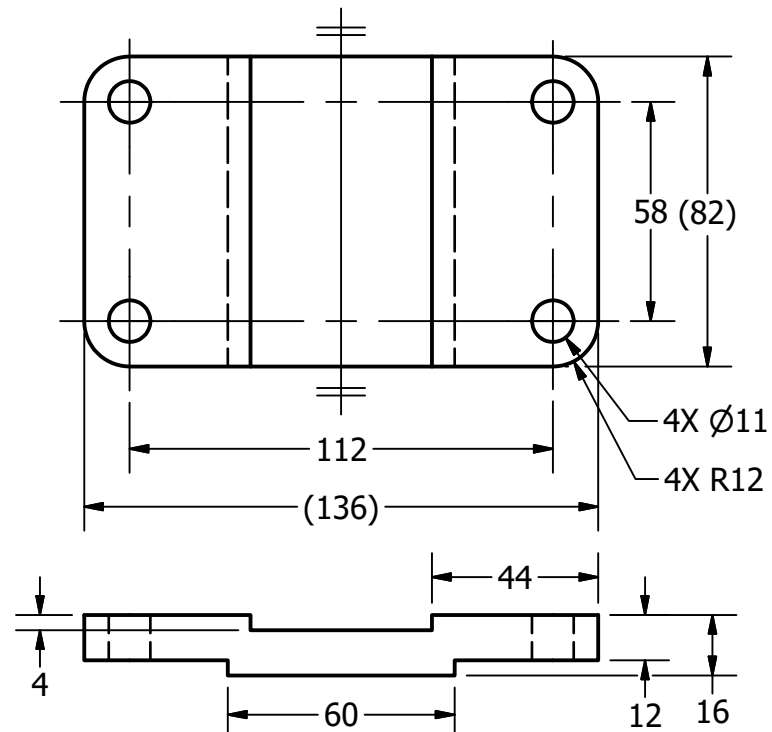
DRAFTER: N. Ebeling

DATE: 11/17/2019

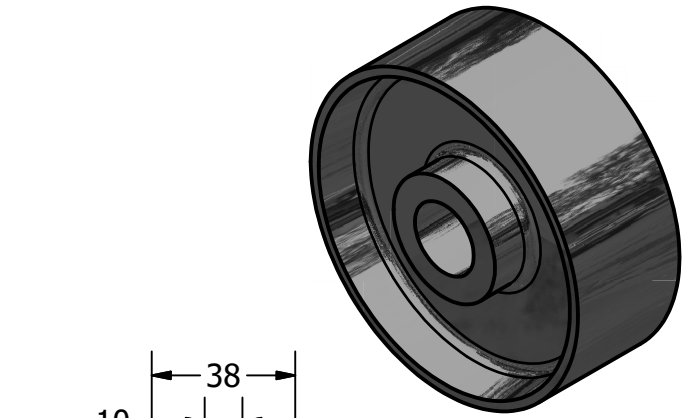
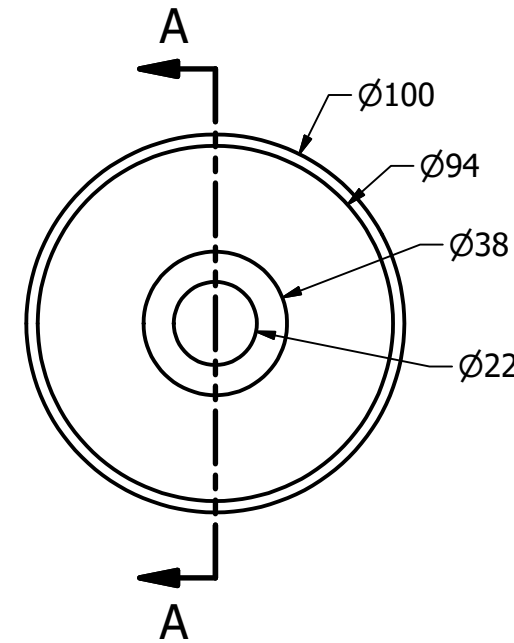
SCALE: AS NOTED

PAGE #: 1 OF 3

PARTS LIST		
ITEM	QTY	PART NUMBER
1	1	TOP PLATE
2	1	WHEEL



TOP PLATE
SCALE 1 / 2



SECTION A-A
SCALE 1 / 2

WHEEL
SCALE 1 / 2

LEGEND:

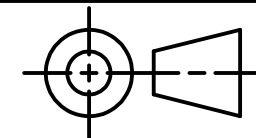
- Ø DIAMETER
- R RADIUS
- ° DEGREES
- ┌ SPOTFACE

METRIC



DIGITAL DESIGN
GRAPHICS
TECHNOLOGY

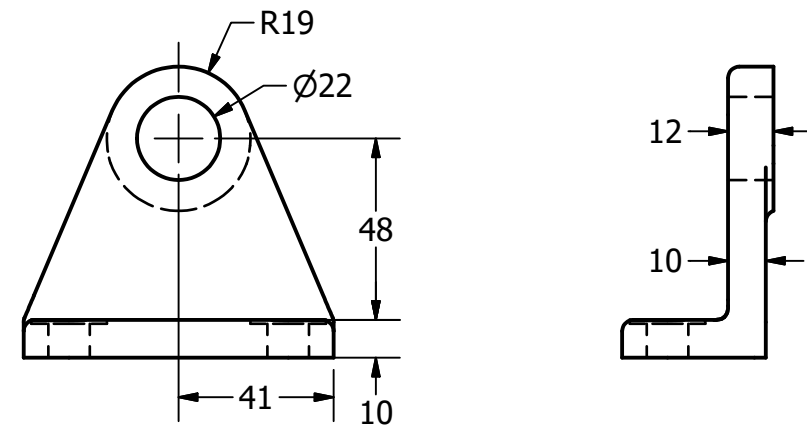
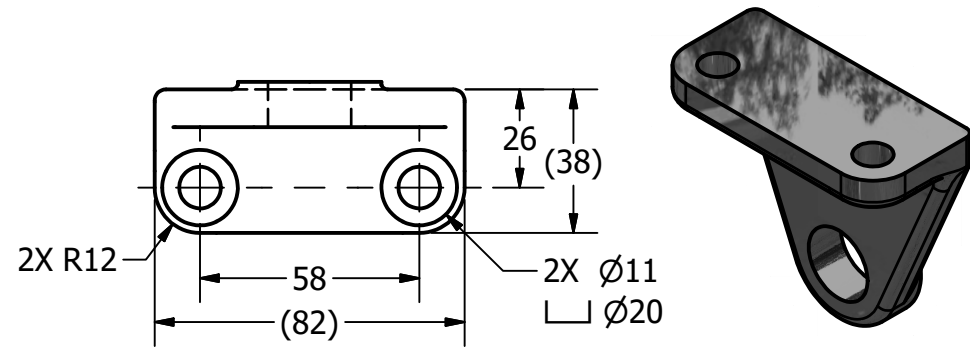
WWW.DDGT.NET



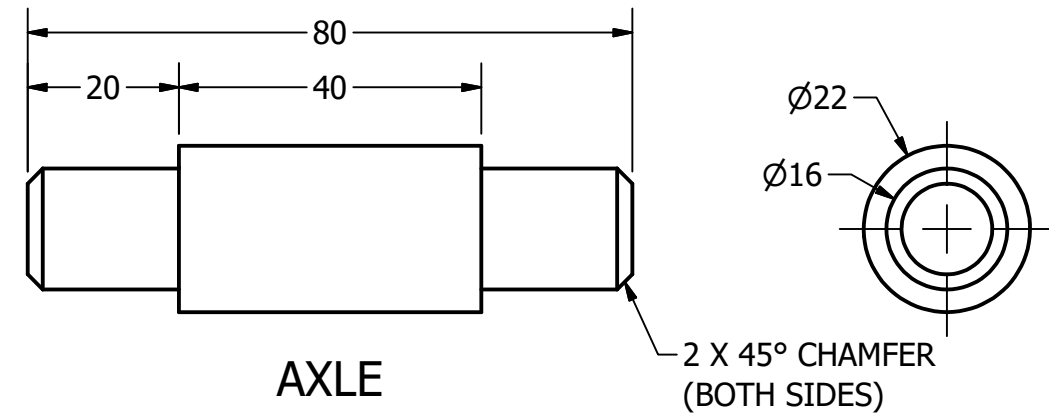
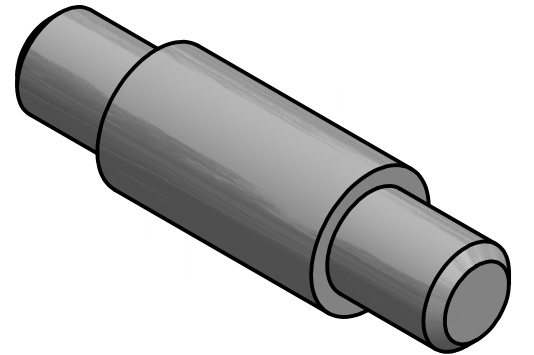
TOLERANCES UNLESS SPECIFIED:
MILLIMETERS:
WHOLE NUMBERS = ±.5
X = ±.25
XX = ±.12
ANGLES ±1 DEGREE
SURFACES 32 ✓

COURSE:	DDGT120
INVENTOR DRAWING NAME:	CASTER
FIG #:	9-51
DRAFTER:	N. Ebeling
DATE:	11/17/2019
SCALE:	AS NOTED
PAGE #:	2 OF 3

PARTS LIST		
ITEM	QTY	PART NUMBER
3	2	AXLE SUPPORT
4	1	AXLE
5	2	BUSHING



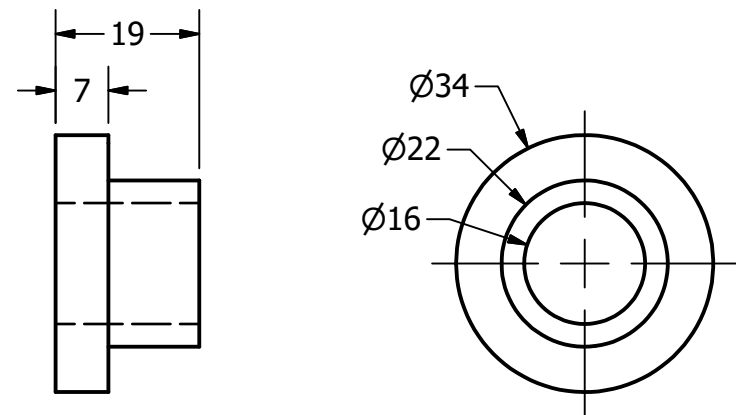
AXLE SUPPORT
SCALE 1 / 2



AXLE
SCALE 1 : 1

LEGEND:

- Ø DIAMETER
- R RADIUS
- ° DEGREES
- ┌ SPOTFACE



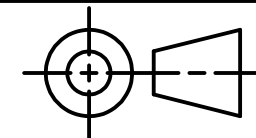
BUSHING
SCALE 1 : 1

METRIC



DIGITAL DESIGN
GRAPHICS
TECHNOLOGY

WWW.DDGT.NET



TOLERANCES UNLESS SPECIFIED:
MILLIMETERS:
WHOLE NUMBERS = ±.5
X = ±.25
XX = ±.12

ANGLES ±1 DEGREE

SURFACES $\sqrt{32}$

COURSE: DDGT120

INVENTOR DRAWING NAME:
CASTER

FIG #: 9-51

DRAFTER: N. Ebeling

DATE: 11/17/2019

SCALE: AS NOTED

PAGE #: 3 OF 3